

---

# **Overview of State Aid to Local Governments Fiscal 2010 Allowance**

---

**Department of Legislative Services  
Office of Policy Analysis  
Annapolis, Maryland**

**January 2009**

**For further information concerning this document contact:**

Library and Information Services  
Office of Policy Analysis  
Department of Legislative Services  
90 State Circle  
Annapolis, Maryland 21401

Baltimore Area: 410-946-5400 • Washington Area: 301-970-5400  
Other Areas: 1-800-492-7122, Extension 5400  
TDD: 410-946-5401 • 301-970-5401  
Maryland Relay Service: 1-800-735-2258  
E-mail: [libr@mlis.state.md.us](mailto:libr@mlis.state.md.us)  
Home Page: <http://mlis.state.md.us>

The Department of Legislative Services does not discriminate on the basis of race, color, national origin, sex, religion, or disability in the admission or access to its programs or activities. The department's Information Officer has been designated to coordinate compliance with the nondiscrimination requirements contained in Section 35.107 of the Department of Justice regulations. Requests for assistance should be directed to the Information Officer at the telephone numbers shown above.

# Contents

---

Proposed State Budget Effect on Local Governments ..... 1

State Aid Reductions Proposed in State Budget ..... 2

Fiscal Crisis Affects State Aid to Local Governments..... 3

Growth in State Aid Slowed in Fiscal 2009 and 2010 ..... 4

State Aid Share of State Budget ..... 5

State Aid by Governmental Entity ..... 6

State Aid Trends by Governmental Entity ..... 7

Public Schools Receive Large State Aid Increase ..... 8

State Aid to County and Municipal Governments ..... 9

State Aid to Local Governments – Comparison by Per Capita Aid and Annual Growth ..... 10

State Aid to Local Governments – Change by Aid Program..... 11

State Aid to Local Governments – Fiscal 2010 Allowance ..... 12

State Aid to Local Governments – Fiscal 2009 Working Appropriation ..... 13

Dollar Difference in State Aid – Fiscal 2009 to 2010 ..... 14

Percent Change in State Aid – Fiscal 2009 to 2010 .....	15
State Assumed Functions in Baltimore City .....	16
Vehicle Titling Taxes Decline – Impacts Highway User Revenues .....	17
Highway User Revenue Allocations in Fiscal 2010 .....	18
Growth in Highway User Revenues.....	19
State Transfer Taxes on the Decline – Impacts Program Open Space .....	20
State Funding Under the Foundation Program in Fiscal 2010.....	21
Total State Aid to Public Schools in Fiscal 2010 .....	22
Direct Aid to Public Schools and Teachers’ Retirement Payments in Fiscal 2010 .....	23
Overpayment of Direct Education Aid in Fiscal 2009 Results in a Lower Growth Rate in Fiscal 2010.....	24
Comparison of Wealth Per Pupil for State Education Aid Programs .....	25
Most School System Experiencing Decline in FTE Student Enrollment .....	26
Students Approved for Free and Reduced Priced Meals .....	27
Students Receiving Special Education Services .....	28
Students Identified as Limited English Proficient.....	29
Racial Composition in Maryland Public Schools .....	30

Local Government Expenditures .....	31
County Government Expenditures .....	32
Municipal Government Expenditures.....	33
Local Government Expenditures by County .....	34



# Proposed State Budget Effect on Local Governments

---

State Funds  
(\$ in Millions)

<u>Budget Action</u>	<u>FY 2009</u>	<u>FY 2010</u>
Local Income Tax Reserve	\$0.0	-\$36.7
Property Assessment Payment	0.0	-36.7
Local Jail Payment	0.0	-6.0
Mandatory Aid Programs	-8.2	-157.8
Discretionary Aid Programs	-48.1	-109.1
<b>Total</b>	<b>-\$56.3</b>	<b>-\$346.2</b>

---

## Net Effect on Local Governments

State Funds  
(\$ in Millions)

	<u>FY 2009</u>	<u>FY 2010</u>
Local Funding Prior to Reductions	\$6,514.1	\$6,788.3
State Budget Action	-\$56.3	-\$346.2
<b>Net Effect</b>	<b>\$6,457.8</b>	<b>\$6,442.0</b>

## State Aid Reductions Proposed in State Budget

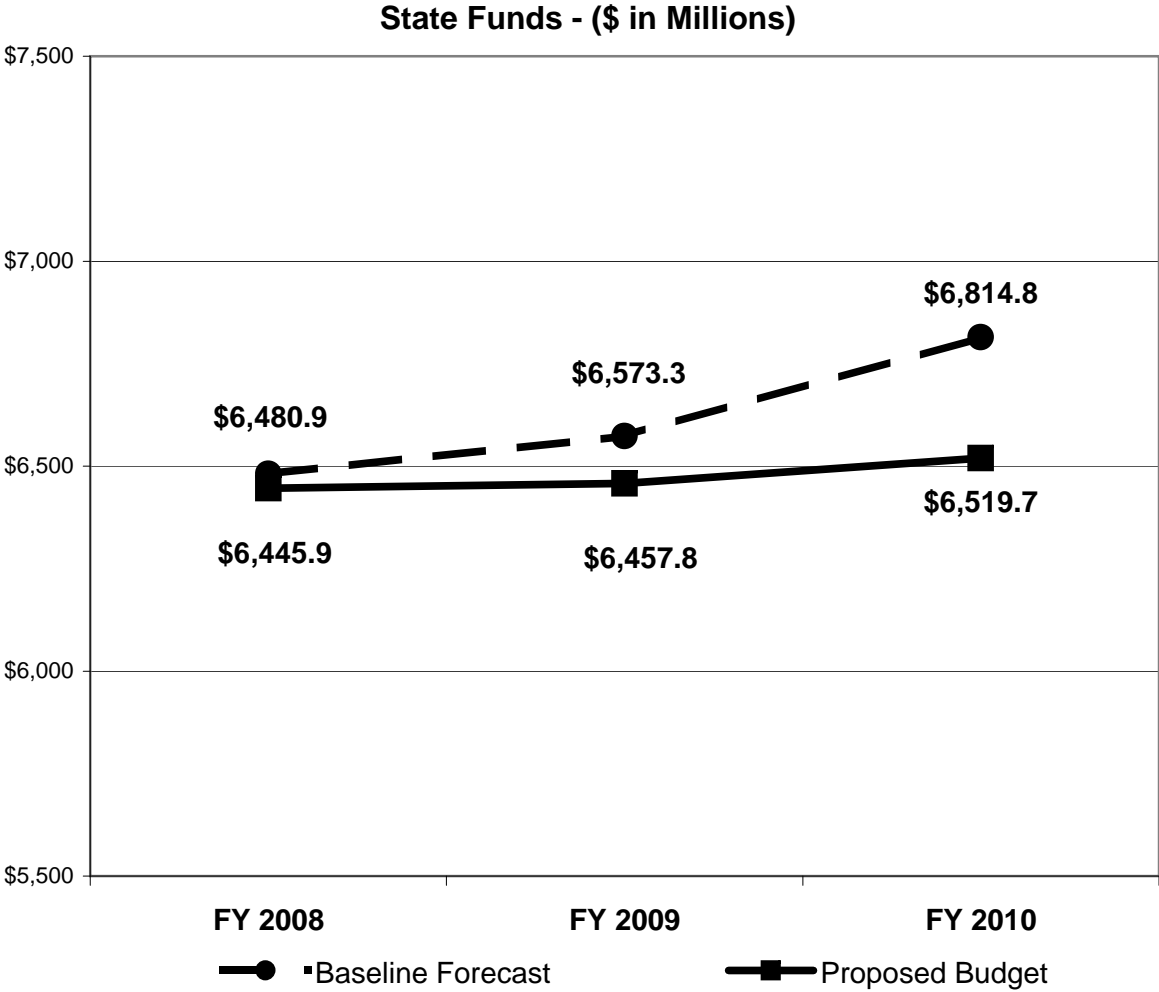
**State Funds  
(\$ in Millions)**

<u>Aid Program</u>	<u>FY 2009</u>	<u>FY 2010</u>	<u>Aid Program</u>	<u>FY 2009</u>	<u>FY 2010</u>
Nonpublic Placements <sup>1</sup>	0.0	48.3	Community Colleges <sup>1</sup>	\$8.2	\$49.9
Supplemental Grant <sup>1</sup>	0.0	43.3			
Geographic Cost Index <sup>3</sup>	38.0	88.5	Local Health <sup>3</sup>	\$10.1	\$13.2
Aging Schools <sup>1</sup>	0.0	5.6			
Teacher Quality Incentives <sup>1</sup>	0.0	5.3	Local Crime Grants <sup>2</sup>	0.0	0.3
School Reconstitution <sup>2</sup>	0.0	3.9	Disabled Transportation <sup>2</sup>	0.0	2.0
Environmental Education <sup>2</sup>	0.0	0.8	<i>Subtotal – County/Municipal</i>	<i>\$0.0</i>	<i>\$2.3</i>
Gifted and Talented <sup>2</sup>	0.0	0.4			
<i>Subtotal – Public Schools</i>	<i>\$38.0</i>	<i>\$196.1</i>			
Library Formula <sup>1</sup>	0.0	3.6	<b>Total</b>	<b>\$56.3</b>	<b>\$266.9</b>
Library Network <sup>1</sup>	0.0	1.7	Mandated Funding	8.2	157.8
<i>Subtotal – Libraries</i>	<i>\$0.0</i>	<i>\$5.3</i>	Discretionary Funding	48.1	109.1

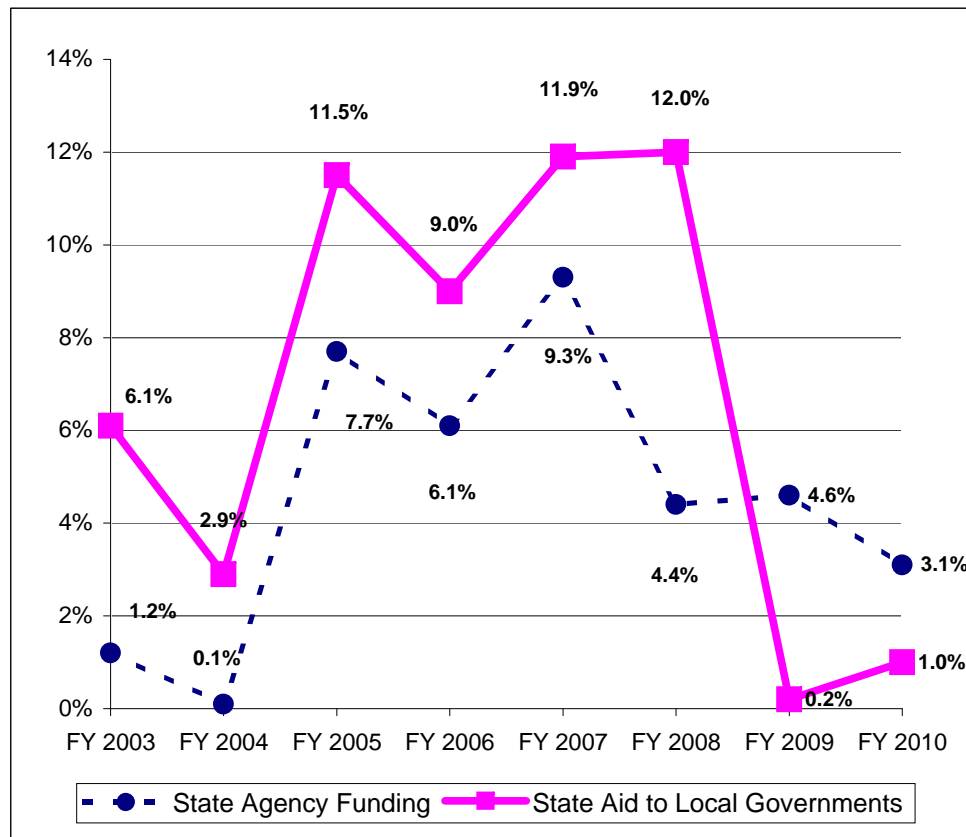
Note: <sup>1</sup>reduction in mandated funding; <sup>2</sup>reduction in discretionary funding; <sup>3</sup>reduction in discretionary formula amount



# Fiscal Crisis Affects State Aid to Local Governments



## Growth in State Aid Slowed in Fiscal 2009 and 2010 General and Special Funds



### Average Annual Increase Fiscal 2002-2010

Public Schools	8.2%
Libraries	4.6%
Community Colleges	4.4%
Local Health Departments	0.0%
Counties/Municipalities	0.5%
Total State Aid	6.7%
<hr/>	
State Agencies	4.5%
Entitlements	5.8%
<hr/>	
Total State Expenditures	5.2%

# State Aid Share of State Budget

**Fiscal 2010**  
**(\$ in Millions)**

	<u>General Funds</u>	<u>All State Funds</u>
State Aid to Local Governments	\$5,901.8	\$6,519.7
Total State Expenditures <sup>1</sup>	14,258.4	22,706.2
Total State Revenues <sup>2</sup>	13,738.3	19,835.4
Percent State Aid – Expenditures	41.4%	28.7%
Percent State Aid – Revenues	43.0%	32.9%

## State Aid Increases Lower than Most Other State Programs

**Fiscal 2010 – General and Special Funds**  
**(\$ in Millions)**

	<u>\$ Change</u>	<u>% Change</u>
Total State Aid to Local Governments	\$61.9	1.0%
Public School Funding	66.3	1.2%
State Agencies	378.2	3.1%
Debt Service	57.2	6.5%
Total State Expenditures	307.9	1.4%

<sup>1</sup>Total State expenditures exclude reserve fund appropriations, PAYGO capital, and reversions.

<sup>2</sup>Total State revenues based on estimates from the Bureau of Revenue Estimates.

# State Aid by Governmental Entity

---

## General and Special Funds (\$ in Millions)

	<u>FY 2010 State Aid Amount</u>	<u>Percent of Total</u>	<u>FY 2010 Aid Increase</u>	<u>Percent Increase</u>
Public Schools	\$5,405.6	82.9%	\$66.3	1.2%
Libraries	63.4	1.0%	-0.3	-0.5%
Community Colleges	251.4	3.9%	4.9	2.0%
Local Health Departments	57.4	0.9%	0.0	0.0%
Counties/Municipalities	741.9	11.4%	-8.9	-1.2%
<b>Total</b>	<b>\$6,519.7</b>	<b>100.0%</b>	<b>\$61.9</b>	<b>1.0%</b>

---

## State Aid Trends by Governmental Entity

### State Aid Amounts (\$ in Millions)

	<u>FY 2003</u>	<u>FY 2004</u>	<u>FY 2005</u>	<u>FY 2006</u>	<u>FY 2007</u>	<u>FY 2008</u>	<u>FY 2009</u>	<u>FY 2010</u>
Public Schools	\$3,117.1	\$3,310.4	\$3,624.9	\$4,009.0	\$4,475.4	\$5,166.3	\$5,339.3	\$5,405.6
Libraries	47.5	49.3	50.3	50.6	55.5	64.1	63.8	63.4
Community Colleges	183.3	174.9	184.0	191.6	205.9	241.7	246.5	251.4
Health Departments	61.9	60.4	60.9	61.9	63.7	67.0	57.4	57.4
Counties/Municipalities	704.1	636.5	796.6	829.9	953.5	906.8	750.8	741.9
<b>Total</b>	<b>\$4,113.9</b>	<b>\$4,231.7</b>	<b>\$4,716.7</b>	<b>\$5,143.1</b>	<b>\$5,754.0</b>	<b>\$6,445.9</b>	<b>\$6,457.8</b>	<b>\$6,519.7</b>

### Percent Change in State Aid

	<u>FY 2003</u>	<u>FY 2004</u>	<u>FY 2005</u>	<u>FY 2006</u>	<u>FY 2007</u>	<u>FY 2008</u>	<u>FY 2009</u>	<u>FY 2010</u>
Public Schools	8.0%	6.2%	9.5%	10.6%	11.6%	15.4%	3.3%	1.2%
Libraries	7.3%	3.9%	1.9%	0.7%	9.6%	15.5%	-0.6%	-0.5%
Community Colleges	2.7%	-4.6%	5.2%	4.1%	7.5%	17.4%	2.0%	2.0%
Health Departments	8.0%	-2.4%	0.7%	1.6%	2.9%	5.2%	-14.4%	0.0%
Counties/Municipalities	-1.0%	-9.6%	25.2%	4.2%	14.9%	-4.9%	-17.2%	-1.2%
<b>Total</b>	<b>6.1%</b>	<b>2.9%</b>	<b>11.5%</b>	<b>9.0%</b>	<b>11.9%</b>	<b>12.0%</b>	<b>0.2%</b>	<b>1.0%</b>

## Public Schools Receive Most of the Increases in State Aid

### Increase in State Aid (\$ in Millions)

	<u>FY 2003</u>	<u>FY 2004</u>	<u>FY 2005</u>	<u>FY 2006</u>	<u>FY 2007</u>	<u>FY 2008</u>	<u>FY 2009</u>	<u>FY 2010</u>
Public Schools	\$231.2	\$193.4	\$314.5	\$384.1	\$466.4	\$690.9	\$173.0	\$66.3
Libraries	3.2	1.8	0.9	0.4	4.9	8.6	-0.4	-0.3
Community Colleges	4.8	-8.4	9.1	7.6	14.3	35.8	4.8	4.9
Health Departments	4.6	-1.5	0.4	1.0	1.8	3.3	-9.6	0.0
Counties/Municipalities	-7.2	-67.6	160.1	33.3	123.6	-46.8	-155.9	-8.9
<b>Total</b>	<b>\$236.6</b>	<b>\$117.7</b>	<b>\$485.1</b>	<b>\$426.4</b>	<b>\$610.9</b>	<b>\$691.9</b>	<b>\$11.8</b>	<b>\$61.9</b>

### Share of State Aid Increase over Eight-year Period (\$ in Millions)

	<u>Aid Increase</u> <u>FY 2002-10</u>	<u>Annual</u> <u>Increase</u>	<u>Percent of</u> <u>Aid Increase</u>	<u>Share of</u> <u>FY 2002 Aid</u>	<u>Share of</u> <u>FY 2010 Aid</u>	<u>Percentage</u> <u>Point</u> <u>Difference</u>
Public Schools	\$2,519.7	8.2%	95.4%	74.4%	82.9%	8.5
Libraries	19.2	4.6%	0.7%	1.1%	1.0%	-0.2
Community Colleges	72.9	4.4%	2.8%	4.6%	3.9%	-0.7
Health Departments	0.0	0.0%	0.0%	1.5%	0.9%	-0.6
Counties/Municipalities	30.6	0.5%	1.2%	18.3%	11.4%	-7.0
<b>Total</b>	<b>\$2,642.3</b>	<b>6.7%</b>	<b>100.0%</b>	<b>100.0%</b>	<b>100.0%</b>	<b>0.0</b>

# State Aid to County and Municipal Governments

---

## State Aid Amounts (\$ in Millions)

	<u>FY 2003</u>	<u>FY 2004</u>	<u>FY 2005</u>	<u>FY 2006</u>	<u>FY 2007</u>	<u>FY 2008</u>	<u>FY 2009</u>	<u>FY 2010</u>
Transportation	\$440.3	\$384.7	\$462.7	\$545.4	\$562.1	\$537.4	\$487.4	\$487.1
Public Safety	90.2	99.3	102.6	103.3	106.5	110.4	108.4	111.3
Land Preservation	18.8	20.6	16.5	46.3	135.6	97.1	20.1	9.2
Disparity Grants	115.2	105.8	93.1	96.6	109.5	114.8	115.5	121.4
Electric Utility Grant	30.6	26.2	30.6	30.6	30.6	29.6	0.0	0.0
Other Grants	9.1	-0.1	91.2	7.8	9.2	17.5	19.4	12.8
<b>Total</b>	<b>\$704.1</b>	<b>\$636.5</b>	<b>\$796.6</b>	<b>\$829.9</b>	<b>\$953.5</b>	<b>\$906.8</b>	<b>\$750.8</b>	<b>\$741.9</b>

---

## State Aid Increase over Eight-year Period (\$ in Millions)

	<u>Aid Increase</u>	<u>Annual</u>	<u>Share of</u>	<u>Share of</u>	<u>Percentage</u>
	<u>FY 2002-10</u>	<u>Increase</u>	<u>FY 2002 Aid</u>	<u>FY 2010 Aid</u>	<u>Point</u>
					<u>Difference</u>
Transportation	\$40.8	1.1%	62.7%	65.7%	2.9
Public Safety	18.3	2.3%	13.1%	15.0%	1.9
Land Preservation	-34.8	-17.7%	6.2%	1.2%	-4.9
Disparity Grants	32.1	3.9%	12.6%	16.4%	3.8
Electric Utility Grant	-30.6	-100.0%	4.3%	0.0%	-4.3
Other Grants	4.7	5.9%	1.1%	1.7%	0.6
<b>Total</b>	<b>\$30.6</b>	<b>0.5%</b>	<b>100.0%</b>	<b>100.0%</b>	<b>0.0</b>

---

## State Aid to Local Governments – Comparison by Per Capita Aid and Annual Growth Fiscal 2009 and 2010

County	Fiscal 2009 Appropriation	Fiscal 2010 Allowance	Difference	Percent Difference	Per Capita State Aid	Annual Growth in State Aid		
Allegany	\$117,344,983	\$118,604,112	\$1,259,129	1.1%	1. Baltimore City	\$1,879	1. Montgomery	7.7%
Anne Arundel	407,037,748	413,119,560	6,081,812	1.5%	2. Caroline	1,721	2. Wicomico	6.7%
Baltimore City	1,203,953,648	1,197,879,557	-6,074,091	-0.5%	3. Allegany	1,634	3. Worcester	4.5%
Baltimore	697,658,831	700,948,009	3,289,178	0.5%	4. Wicomico	1,579	4. Howard	3.8%
Calvert	108,912,922	111,574,922	2,662,000	2.4%	5. Somerset	1,414	5. Talbot	3.6%
Caroline	56,988,393	56,640,069	-348,324	-0.6%	6. Garrett	1,395	6. Somerset	3.1%
Carroll	188,314,925	188,561,222	246,297	0.1%	7. Dorchester	1,378	7. Washington	2.6%
Cecil	126,122,212	126,941,445	819,233	0.6%	8. Charles	1,368	8. Calvert	2.4%
Charles	189,724,737	192,151,035	2,426,298	1.3%	9. Prince George's	1,332	9. Queen Anne's	2.3%
Dorchester	44,164,502	43,885,474	-279,028	-0.6%	10. Cecil	1,273	10. Frederick	1.5%
Frederick	263,641,736	267,692,383	4,050,647	1.5%	11. Washington	1,266	11. Anne Arundel	1.5%
Garrett	41,327,845	41,322,234	-5,611	0.0%	12. Calvert	1,265	12. Charles	1.3%
Harford	272,287,007	273,872,307	1,585,300	0.6%	13. Frederick	1,191	13. Allegany	1.1%
Howard	274,716,638	285,094,593	10,377,955	3.8%	14. St. Mary's	1,180	14. Cecil	0.6%
Kent	16,606,619	16,439,197	-167,422	-1.0%	15. Harford	1,141	15. Harford	0.6%
Montgomery	663,380,911	714,574,731	51,193,820	7.7%	16. Carroll	1,114	16. Baltimore	0.5%
Prince George's	1,117,434,068	1,104,028,710	-13,405,358	-1.2%	17. Howard	1,042	17. Carroll	0.1%
Queen Anne's	44,202,164	45,233,314	1,031,150	2.3%	18. Queen Anne's	971	18. Garrett	0.0%
St. Mary's	118,790,084	118,401,884	-388,200	-0.3%	19. Baltimore	888	19. St. Mary's	-0.3%
Somerset	35,658,435	36,774,931	1,116,496	3.1%	20. Kent	822	20. Baltimore City	-0.5%
Talbot	20,489,957	21,231,678	741,721	3.6%	21. Anne Arundel	807	21. Caroline	-0.6%
Washington	178,975,051	183,685,901	4,710,850	2.6%	22. Montgomery	768	22. Dorchester	-0.6%
Wicomico	138,519,175	147,775,703	9,256,528	6.7%	23. Worcester	705	23. Kent	-1.0%
Worcester	33,322,421	34,806,752	1,484,331	4.5%	24. Talbot	587	24. Prince George's	-1.2%
Unallocated	98,195,378	78,431,861	-19,763,517	-20.1%				
<b>Total</b>	<b>\$6,457,770,390</b>	<b>\$6,519,671,584</b>	<b>\$61,901,194</b>	<b>1.0%</b>	<b>Statewide Average</b>	<b>\$1,160</b>	<b>Statewide Average</b>	<b>1.0%</b>



## State Aid to Local Governments – Change by Aid Program

### Fiscal 2009 and 2010

County	Total Aid	Foundation	Supplemental	Compensatory	Nonpublic Placements	Guaranteed Tax Base	Teachers' Retirement	Program Open Space	Disparity Grant
Allegany	\$1,259,129	-\$1,047,084	\$0	\$318,986	-\$333,968	\$541,415	\$1,265,410	-\$136,727	\$555,635
Anne Arundel	6,081,812	-3,879,298	0	1,667,659	-3,817,898	0	12,069,467	-1,443,581	0
Baltimore City	-6,074,091	190,326	-12,976,671	1,472,882	-9,481,216	-4,541,858	12,974,256	108,743	3,527,534
Baltimore	3,289,178	-9,264,794	0	4,977,002	-5,668,143	0	13,017,767	-1,634,890	0
Calvert	2,662,000	-945,054	0	595,948	-340,711	0	2,777,194	-142,193	0
Caroline	-348,324	-1,076,771	520,374	233,555	-82,065	-270,021	753,462	-63,550	-121,543
Carroll	246,297	-3,348,306	0	795,173	-1,305,276	0	4,586,052	-324,200	0
Cecil	819,233	-1,828,522	0	1,761,389	-687,362	-613,105	2,174,234	-166,834	0
Charles	2,426,298	-1,799,776	0	1,562,896	-489,213	-1,858,217	4,477,275	-293,136	0
Dorchester	-279,028	-1,065,539	968,683	-415,415	-23,875	-293,029	794,571	-53,994	-108,018
Frederick	4,050,647	-3,329,753	0	1,094,211	-847,386	0	6,697,615	-332,736	0
Garrett	-5,611	-838,723	134,951	41,612	-73,580	0	598,376	-66,259	119,241
Harford	1,585,300	-4,297,197	0	1,839,037	-1,855,359	0	5,158,631	-479,481	0
Howard	10,377,955	-358,642	0	1,316,984	-1,251,990	0	10,133,621	-850,642	0
Kent	-167,422	-724,334	331,039	-12,988	-45,449	0	333,234	-40,067	0
Montgomery	51,193,820	33,235,512	-10,039,105	5,223,774	-4,975,726	0	25,083,770	-2,136,783	0
Prince George's	-13,405,358	-20,681,601	15,831,710	-2,511,450	-10,495,242	-18,038,133	23,755,697	-1,846,967	-19,547
Queen Anne's	1,031,150	-63,102	0	275,345	-130,492	0	1,062,044	-85,568	0
St. Mary's	-388,200	-2,127,208	2,464,942	-1,365,826	-262,461	-1,075,287	2,195,140	-162,064	0
Somerset	1,116,496	-233,235	-525,644	701,664	0	-132,568	569,526	-39,214	537,658
Talbot	741,721	28,868	0	259,760	-9,811	0	422,696	-89,313	0
Washington	4,710,850	-466,274	0	2,826,883	-606,975	-390,347	3,139,660	-255,702	0
Wicomico	9,256,528	1,110,690	0	3,451,668	-79,893	616,559	1,926,427	-170,795	1,455,417
Worcester	1,484,331	-58,238	0	202,613	0	0	1,341,029	-158,777	0
Unallocated	-19,763,517	0	0	0	-4,189,948	0	0	0	0
<b>Total</b>	<b>\$61,901,194</b>	<b>-\$22,868,055</b>	<b>-\$3,289,721</b>	<b>\$26,313,362</b>	<b>-\$47,054,039</b>	<b>-\$26,054,591</b>	<b>\$137,307,154</b>	<b>-\$10,864,730</b>	<b>\$5,946,377</b>

## State Aid to Local Governments – Fiscal 2010 Allowance (\$ in Thousands)

County	County/ Municipal	Community Colleges	Direct State Aid			Subtotal	Retirement	Total
			Public Schools	Libraries	Health			
Allegany	\$15,044	\$5,851	\$86,109	\$747	\$1,398	\$109,150	\$9,455	\$118,604
Anne Arundel	37,350	28,747	273,395	1,863	4,834	346,188	66,932	413,120
Baltimore City	292,161	0	811,391	6,355	10,269	1,120,176	77,704	1,197,880
Baltimore	49,725	38,826	508,143	5,161	6,619	608,473	92,475	700,948
Calvert	7,469	2,155	85,255	398	569	95,846	15,729	111,575
Caroline	7,313	1,352	42,113	267	828	51,872	4,768	56,640
Carroll	14,727	7,204	139,046	971	1,895	163,843	24,718	188,561
Cecil	8,353	4,979	97,674	691	1,241	112,939	14,003	126,941
Charles	10,930	6,883	149,321	787	1,530	169,451	22,700	192,151
Dorchester	7,740	1,198	29,882	237	660	39,717	4,169	43,885
Frederick	19,966	8,165	201,467	1,096	2,326	233,020	34,672	267,692
Garrett	8,285	3,195	24,776	154	673	37,084	4,238	41,322
Harford	18,170	10,049	207,329	1,525	2,673	239,746	34,126	273,872
Howard	18,781	13,018	196,216	739	1,869	230,623	54,472	285,095
Kent	3,053	512	10,015	94	517	14,191	2,248	16,439
Montgomery	57,169	40,780	449,413	2,513	4,638	554,514	160,061	714,575
Prince George's	76,905	22,545	871,833	5,845	7,703	984,831	119,198	1,104,029
Queen Anne's	5,917	1,675	30,765	126	643	39,126	6,107	45,233
St. Mary's	8,311	2,211	92,455	620	1,244	104,841	13,560	118,402
Somerset	8,567	741	23,681	253	661	33,903	2,872	36,775
Talbot	4,882	1,257	10,915	98	506	17,658	3,574	21,232
Washington	12,805	7,446	142,431	1,093	2,125	165,900	17,786	183,686
Wicomico	12,048	4,432	116,079	801	1,457	134,817	12,958	147,776
Worcester	7,474	1,808	17,391	133	481	27,288	7,519	34,807
Unallocated	26,249	7,159	29,416	15,609	0	78,432	0	78,432
<b>Total</b>	<b>\$739,394</b>	<b>\$222,186</b>	<b>\$4,646,511</b>	<b>\$48,176</b>	<b>\$57,359</b>	<b>\$5,713,627</b>	<b>\$806,045</b>	<b>\$6,519,672</b>

Note: County/Municipal includes the municipal share of police aid, highway user revenue, and fire aid.

## State Aid to Local Governments – Fiscal 2009 Working Appropriation (\$ in Thousands)

County	Direct State Aid						Retirement	Total
	County/ Municipal	Community Colleges	Public Schools	Libraries	Health	Subtotal		
Allegany	\$14,721	\$5,805	\$86,711	\$770	\$1,398	\$109,405	\$7,940	\$117,345
Anne Arundel	38,650	28,830	278,508	1,991	4,834	352,814	54,224	407,038
Baltimore City	287,943	0	834,982	6,586	10,269	1,139,780	64,174	1,203,954
Baltimore	51,579	39,112	516,608	5,422	6,619	619,338	78,321	697,659
Calvert	7,139	2,142	85,771	446	569	96,068	12,845	108,913
Caroline	7,555	1,377	42,989	280	828	53,029	3,959	56,988
Carroll	15,155	7,251	143,074	1,038	1,895	168,413	19,901	188,315
Cecil	8,561	4,936	98,984	732	1,241	114,453	11,669	126,122
Charles	11,211	6,932	151,169	853	1,530	171,696	18,029	189,725
Dorchester	7,971	1,221	30,732	248	660	40,832	3,333	44,165
Frederick	20,341	8,116	204,061	1,135	2,326	235,979	27,663	263,642
Garrett	8,292	3,146	25,480	164	673	37,755	3,573	41,328
Harford	18,718	10,011	210,745	1,627	2,673	243,775	28,512	272,287
Howard	19,785	12,952	195,587	763	1,869	230,956	43,760	274,717
Kent	3,149	522	10,425	104	517	14,717	1,890	16,607
Montgomery	59,454	40,777	422,330	2,610	4,638	529,809	133,572	663,381
Prince George's	78,971	22,597	907,074	6,522	7,703	1,022,868	94,567	1,117,434
Queen Anne's	6,048	1,707	30,683	133	643	39,213	4,989	44,202
St. Mary's	8,454	2,198	94,954	659	1,244	107,509	11,282	118,790
Somerset	8,116	737	23,597	263	661	33,374	2,284	35,658
Talbot	4,996	1,281	10,504	101	506	17,387	3,103	20,490
Washington	13,103	7,385	140,787	1,135	2,125	164,536	14,439	178,975
Wicomico	10,627	4,408	110,294	811	1,457	127,598	10,922	138,519
Worcester	7,695	1,799	17,129	137	481	27,240	6,082	33,322
Unallocated	30,381	7,108	44,353	16,353	0	98,195	0	98,195
<b>Total</b>	<b>\$748,615</b>	<b>\$222,351</b>	<b>\$4,717,531</b>	<b>\$50,883</b>	<b>\$57,359</b>	<b>\$5,796,739</b>	<b>\$661,031</b>	<b>\$6,457,770</b>

Note: County/Municipal includes the municipal share of police aid, highway user revenue, and fire aid.

## Dollar Difference in State Aid – Fiscal 2009 to 2010

(\$ in Thousands)

County	<i>Direct State Aid</i>					Subtotal	Retirement	Total
	County/ Municipal	Community Colleges	Public Schools	Libraries	Health			
Allegany	\$323	\$46	-\$601	-\$23	\$0	-\$255	\$1,515	\$1,259
Anne Arundel	-1,300	-84	-5,114	-128	0	-6,626	12,708	6,082
Baltimore City	4,218	0	-23,591	-231	0	-19,604	13,530	-6,074
Baltimore	-1,853	-286	-8,465	-261	0	-10,865	14,154	3,289
Calvert	330	13	-517	-48	0	-221	2,883	2,662
Caroline	-242	-26	-877	-13	0	-1,157	809	-348
Carroll	-428	-47	-4,028	-67	0	-4,570	4,816	246
Cecil	-208	43	-1,310	-40	0	-1,515	2,334	819
Charles	-281	-50	-1,848	-67	0	-2,245	4,672	2,426
Dorchester	-231	-23	-850	-12	0	-1,115	836	-279
Frederick	-375	49	-2,594	-39	0	-2,959	7,010	4,051
Garrett	-7	49	-703	-10	0	-671	665	-6
Harford	-548	38	-3,417	-102	0	-4,029	5,614	1,585
Howard	-1,004	66	628	-24	0	-334	10,712	10,378
Kent	-96	-10	-410	-9	0	-525	358	-167
Montgomery	-2,285	3	27,083	-97	0	24,704	26,489	51,194
Prince George's	-2,067	-52	-35,241	-677	0	-38,036	24,631	-13,405
Queen Anne's	-130	-32	82	-7	0	-87	1,118	1,031
St. Mary's	-143	13	-2,499	-39	0	-2,667	2,279	-388
Somerset	451	4	83	-10	0	528	588	1,116
Talbot	-114	-24	412	-3	0	270	471	742
Washington	-299	61	1,644	-42	0	1,364	3,347	4,711
Wicomico	1,421	23	5,786	-11	0	7,220	2,037	9,257
Worcester	-221	10	262	-4	0	47	1,437	1,484
Unallocated	-4,132	50	-14,937	-744	0	-19,764	0	-19,764
<b>Total</b>	<b>-\$9,221</b>	<b>-\$165</b>	<b>-\$71,020</b>	<b>-\$2,707</b>	<b>\$0</b>	<b>-\$83,112</b>	<b>\$145,014</b>	<b>\$61,901</b>

Note: County/Municipal includes the municipal share of police aid, highway user revenue, and fire aid.

## Percent Change in State Aid – Fiscal 2009 to 2010

County	<i>Direct State Aid</i>						Retirement	Total
	County/ Municipal	Community Colleges	Public Schools	Libraries	Health	Subtotal		
Allegany	2.2%	0.8%	-0.7%	-2.9%	0.0%	-0.2%	19.1%	1.1%
Anne Arundel	-3.4%	-0.3%	-1.8%	-6.4%	0.0%	-1.9%	23.4%	1.5%
Baltimore City	1.5%	n/a	-2.8%	-3.5%	0.0%	-1.7%	21.1%	-0.5%
Baltimore	-3.6%	-0.7%	-1.6%	-4.8%	0.0%	-1.8%	18.1%	0.5%
Calvert	4.6%	0.6%	-0.6%	-10.8%	0.0%	-0.2%	22.4%	2.4%
Caroline	-3.2%	-1.9%	-2.0%	-4.7%	0.0%	-2.2%	20.4%	-0.6%
Carroll	-2.8%	-0.6%	-2.8%	-6.5%	0.0%	-2.7%	24.2%	0.1%
Cecil	-2.4%	0.9%	-1.3%	-5.5%	0.0%	-1.3%	20.0%	0.6%
Charles	-2.5%	-0.7%	-1.2%	-7.8%	0.0%	-1.3%	25.9%	1.3%
Dorchester	-2.9%	-1.9%	-2.8%	-4.7%	0.0%	-2.7%	25.1%	-0.6%
Frederick	-1.8%	0.6%	-1.3%	-3.4%	0.0%	-1.3%	25.3%	1.5%
Garrett	-0.1%	1.6%	-2.8%	-6.0%	0.0%	-1.8%	18.6%	0.0%
Harford	-2.9%	0.4%	-1.6%	-6.3%	0.0%	-1.7%	19.7%	0.6%
Howard	-5.1%	0.5%	0.3%	-3.1%	0.0%	-0.1%	24.5%	3.8%
Kent	-3.1%	-1.9%	-3.9%	-9.0%	0.0%	-3.6%	18.9%	-1.0%
Montgomery	-3.8%	0.0%	6.4%	-3.7%	0.0%	4.7%	19.8%	7.7%
Prince George's	-2.6%	-0.2%	-3.9%	-10.4%	0.0%	-3.7%	26.0%	-1.2%
Queen Anne's	-2.2%	-1.9%	0.3%	-5.5%	0.0%	-0.2%	22.4%	2.3%
St. Mary's	-1.7%	0.6%	-2.6%	-5.9%	0.0%	-2.5%	20.2%	-0.3%
Somerset	5.6%	0.5%	0.4%	-3.7%	0.0%	1.6%	25.7%	3.1%
Talbot	-2.3%	-1.9%	3.9%	-3.2%	0.0%	1.6%	15.2%	3.6%
Washington	-2.3%	0.8%	1.2%	-3.7%	0.0%	0.8%	23.2%	2.6%
Wicomico	13.4%	0.5%	5.2%	-1.3%	0.0%	5.7%	18.6%	6.7%
Worcester	-2.9%	0.5%	1.5%	-2.6%	0.0%	0.2%	23.6%	4.5%
Unallocated	-13.6%	0.7%	-33.7%	-4.6%	n/a	-20.1%	n/a	-20.1%
<b>Total</b>	<b>-1.2%</b>	<b>-0.1%</b>	<b>-1.5%</b>	<b>-5.3%</b>	<b>0.0%</b>	<b>-1.4%</b>	<b>21.9%</b>	<b>1.0%</b>

Note: County/Municipal includes the municipal share of police aid, highway user revenue, and fire aid.

# State Assumed Functions in Baltimore City

---

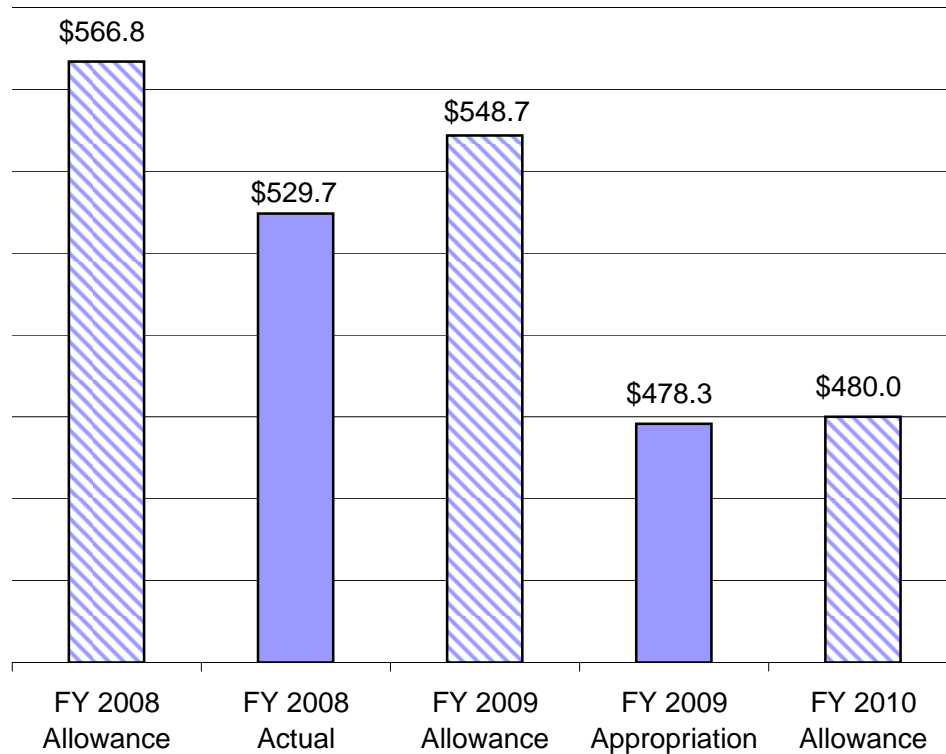
## General and Special Funds (\$ in Millions)

<b>State Assumed Functions</b>	<b><u>FY 2008</u></b>	<b><u>FY 2009</u></b>	<b><u>FY 2010</u></b>	<b><u>Difference</u></b>	<b><u>Percent Difference</u></b>
Baltimore City Community College	\$40.4	\$41.0	\$42.6	\$1.6	4.0%
Baltimore City Detention Center	89.4	86.1	92.0	5.9	6.9%
Baltimore City Central Booking Facility	<u>47.2</u>	<u>49.5</u>	<u>50.6</u>	<u>1.1</u>	<u>2.2%</u>
<b>Subtotal</b>	<b>\$177.1</b>	<b>\$176.6</b>	<b>\$185.3</b>	<b>\$8.7</b>	<b>4.9%</b>
Direct Aid and Retirement Payments	<u>1,233.8</u>	<u>\$1,204.0</u>	<u>\$1,197.9</u>	<u>-\$6.1</u>	<u>-0.5%</u>
<b>Total State Assistance</b>	<b>\$1,410.9</b>	<b>\$1,380.5</b>	<b>\$1,383.1</b>	<b>\$2.6</b>	<b>0.2%</b>

---

Note: Fiscal 2010 amount does not reflect back of the budget bill reductions that have been allocated to the Department of Public Safety and Correctional Services.

## Vehicle Titling Taxes Decline – Impacts Highway User Revenues (\$ in Millions)



Fiscal 2008	
Vehicle Fuel Taxes	\$755.2
Vehicle Titling Taxes	649.7
Vehicle Registration Fees	355.0
<b>Local Highway User Revenues</b>	<b>\$529.7</b>

Fiscal 2009	
Vehicle Fuel Taxes	\$740.6
Vehicle Titling Taxes	550.0
Vehicle Registration Fees	365.0
<b>Local Highway User Revenues</b>	<b>\$478.3</b>

Fiscal 2010	
Vehicle Fuel Taxes	\$749.1
Vehicle Titling Taxes	561.0
Vehicle Registration Fees	360.7
<b>Local Highway User Revenues</b>	<b>\$480.0</b>

Source: Department of Legislative Services

## Highway User Revenue Allocations in Fiscal 2010

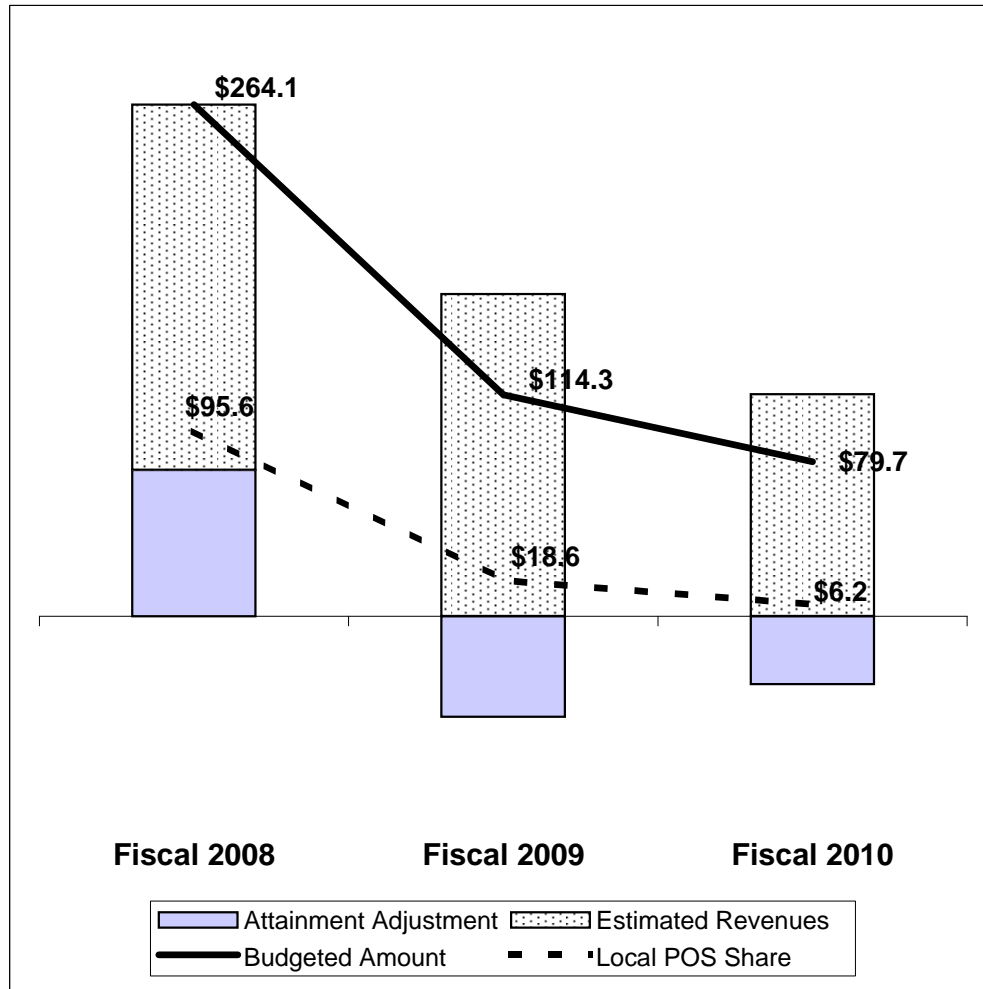
County	County Share	Municipal Share	Total Amount	% County	% Municipal
Allegany	\$4,164,579	\$2,230,407	\$6,394,986	65.1%	34.9%
Anne Arundel	26,223,982	1,693,226	27,917,207	93.9%	6.1%
Baltimore City	193,582,000	0	193,582,000	100.0%	0.0%
Baltimore	37,553,431	0	37,553,431	100.0%	0.0%
Calvert	5,673,989	531,452	6,205,441	91.4%	8.6%
Caroline	3,583,760	857,857	4,441,617	80.7%	19.3%
Carroll	10,196,558	2,343,952	12,540,510	81.3%	18.7%
Cecil	5,802,980	1,146,609	6,949,589	83.5%	16.5%
Charles	8,355,776	644,627	9,000,402	92.8%	7.2%
Dorchester	3,719,238	1,191,695	4,910,933	75.7%	24.3%
Frederick	12,036,207	4,505,918	16,542,125	72.8%	27.2%
Garrett	4,713,270	847,502	5,560,772	84.8%	15.2%
Harford	12,791,254	1,772,498	14,563,752	87.8%	12.2%
Howard	13,826,941	0	13,826,941	100.0%	0.0%
Kent	1,964,856	531,078	2,495,934	78.7%	21.3%
Montgomery	33,046,344	6,177,243	39,223,587	84.3%	15.7%
Prince George's	25,958,116	8,213,103	34,171,220	76.0%	24.0%
Queen Anne's	4,816,715	322,923	5,139,638	93.7%	6.3%
St. Mary's	6,790,816	118,141	6,908,956	98.3%	1.7%
Somerset	2,565,324	401,626	2,966,950	86.5%	13.5%
Talbot	2,848,660	1,241,724	4,090,385	69.6%	30.4%
Washington	7,905,399	2,734,800	10,640,199	74.3%	25.7%
Wicomico	6,473,107	1,820,308	8,293,415	78.1%	21.9%
Worcester	4,573,819	1,520,289	6,094,109	75.1%	24.9%
<b>Total</b>	<b>\$439,167,121</b>	<b>\$40,846,978</b>	<b>\$480,014,100</b>	<b>91.5%</b>	<b>8.5%</b>



## Growth in Highway User Revenues

County	FY 2002	FY 2010	8-Year Funding Increase	Average Annual Increase
Allegany	\$6,314,386	\$6,394,986	\$80,600	0.2%
Anne Arundel	25,685,436	27,917,207	2,231,771	1.0%
Baltimore City	175,487,613	193,582,000	18,094,387	1.2%
Baltimore	35,718,050	37,553,431	1,835,381	0.6%
Calvert	4,984,897	6,205,441	1,220,544	2.8%
Caroline	4,143,839	4,441,617	297,778	0.9%
Carroll	11,303,204	12,540,510	1,237,306	1.3%
Cecil	6,386,968	6,949,589	562,621	1.1%
Charles	7,742,474	9,000,402	1,257,928	1.9%
Dorchester	4,732,182	4,910,933	178,751	0.5%
Frederick	14,695,580	16,542,125	1,846,545	1.5%
Garrett	5,380,192	5,560,772	180,580	0.4%
Harford	13,080,162	14,563,752	1,483,590	1.4%
Howard	13,002,863	13,826,941	824,078	0.8%
Kent	2,388,791	2,495,934	107,143	0.5%
Montgomery	37,052,031	39,223,587	2,171,556	0.7%
Prince George's	31,950,489	34,171,220	2,220,731	0.8%
Queen Anne's	4,650,898	5,139,638	488,740	1.3%
St. Mary's	5,997,506	6,908,956	911,450	1.8%
Somerset	2,833,823	2,966,950	133,127	0.6%
Talbot	3,767,997	4,090,385	322,388	1.0%
Washington	9,751,630	10,640,199	888,569	1.1%
Wicomico	7,519,388	8,293,415	774,027	1.2%
Worcester	5,608,773	6,094,109	485,336	1.0%
<b>Total</b>	<b>\$440,179,172</b>	<b>\$480,014,100</b>	<b>\$39,834,927</b>	<b>1.1%</b>

## State Transfer Taxes on the Decline – Impacts Program Open Space (\$ in Millions)




---

<b>Fiscal 2008</b>	
Attainment Adjustment	\$75.5
Estimated Revenue	188.6
Budgeted Amount	264.1
<b>Local POS Share</b>	<b>\$95.6</b>

---

<b>Fiscal 2009</b>	
Attainment Adjustment	-\$52.0
Estimated Revenue	166.3
Budgeted Amount	114.3
<b>Local POS Share</b>	<b>\$18.6</b>

---

<b>Fiscal 2010</b>	
Attainment Adjustment	-\$35.0
Estimated Revenue	114.7
Budgeted Amount	79.7
<b>Local POS Share</b>	<b>\$6.2</b>

POS = Program Open Space

Source: Department of Legislative Services

## State Funding Under the Foundation Program in Fiscal 2010

County	Foundation Formula	Supplemental Grant	Geographic Cost Index	Total - Foundation	<u>Ranking by Per Pupil Aid</u>
Allegany	\$43,943,534	\$0	\$0	\$43,943,534	1. Baltimore City \$5,257
Anne Arundel	178,140,696	0	2,596,771	180,737,467	2. Allegany 5,126
Baltimore City	381,625,287	12,099,976	6,572,031	400,297,294	3. Caroline 4,759
Baltimore	329,554,423	0	1,595,414	331,149,838	4. Somerset 4,499
Calvert	64,125,135	0	702,747	64,827,882	5. Wicomico 4,458
Caroline	24,534,729	520,374	0	25,055,102	6. Prince George's 4,333
Carroll	106,356,233	0	776,770	107,133,003	7. Dorchester 4,215
Cecil	65,368,972	0	0	65,368,972	8. Cecil 4,192
Charles	105,761,915	0	1,038,661	106,800,576	9. Washington 4,178
Dorchester	17,371,666	968,683	0	18,340,349	10. Charles 4,079
Frederick	147,835,196	0	1,884,676	149,719,871	11. St. Mary's 4,065
Garrett	14,443,161	649,168	0	15,092,329	12. Harford 3,944
Harford	148,584,804	0	0	148,584,804	13. Carroll 3,894
Howard	144,965,887	0	1,471,079	146,436,966	14. Calvert 3,886
Kent	3,731,954	813,647	41,791	4,587,391	15. Frederick 3,783
Montgomery	223,469,263	0	9,284,073	232,753,336	16. Garrett 3,589
Prince George's	495,593,625	15,831,710	11,718,233	523,143,568	17. Baltimore 3,338
Queen Anne's	21,112,791	0	166,058	21,278,849	18. Howard 2,978
St. Mary's	63,526,895	2,464,942	64,313	66,056,149	19. Queen Anne's 2,801
Somerset	12,314,728	0	0	12,314,728	20. Anne Arundel 2,508
Talbot	4,277,717	0	0	4,277,717	21. Kent 2,270
Washington	89,941,049	0	0	89,941,049	22. Montgomery 1,702
Wicomico	65,213,041	0	0	65,213,041	23. Talbot 1,014
Worcester	6,343,904	0	0	6,343,904	24. Worcester 1,010
<b>Total</b>	<b>\$2,758,136,604</b>	<b>\$33,348,499</b>	<b>\$37,912,617</b>	<b>\$2,829,397,720</b>	<b>State Average \$3,472</b>

Source: Department of Legislative Services

## Total State Aid to Public Schools in Fiscal 2010

County	Enrollment	Total State Aid	Per Pupil Amount	<u>Ranking by Per Pupil Aid</u>	
Allegany	8,573	\$94,130,831	\$10,980	1.	Baltimore City \$11,624
Anne Arundel	72,066	336,023,333	4,663	2.	Allegany 10,980
Baltimore City	76,150	885,170,446	11,624	3.	Somerset 9,654
Baltimore	99,196	594,141,507	5,990	4.	Caroline 8,844
Calvert	16,684	100,417,716	6,019	5.	Wicomico 8,778
Caroline	5,265	46,562,801	8,844	6.	Prince George's 8,164
Carroll	27,514	162,451,043	5,904	7.	Dorchester 7,774
Cecil	15,593	110,925,090	7,114	8.	Washington 7,387
Charles	26,181	170,866,850	6,526	9.	Cecil 7,114
Dorchester	4,351	33,822,974	7,774	10.	Garrett 6,810
Frederick	39,578	234,483,733	5,925	11.	Charles 6,526
Garrett	4,205	28,635,240	6,810	12.	St. Mary's 6,491
Harford	37,675	238,906,904	6,341	13.	Harford 6,341
Howard	49,179	247,773,267	5,038	14.	Calvert 6,019
Kent	2,021	12,136,475	6,005	15.	Kent 6,005
Montgomery	136,722	599,394,598	4,384	16.	Baltimore 5,990
Prince George's	120,747	985,732,110	8,164	17.	Frederick 5,925
Queen Anne's	7,598	36,543,396	4,810	18.	Carroll 5,904
St. Mary's	16,251	105,486,629	6,491	19.	Howard 5,038
Somerset	2,737	26,424,326	9,654	20.	Queen Anne's 4,810
Talbot	4,220	14,225,144	3,371	21.	Anne Arundel 4,663
Washington	21,526	159,012,057	7,387	22.	Montgomery 4,384
Wicomico	14,627	128,396,312	8,778	23.	Worcester 3,904
Worcester	6,278	24,509,110	3,904	24.	Talbot 3,371
Unallocated	0	29,415,901	36		
<b>Total</b>	<b>814,937</b>	<b>\$5,405,587,793</b>	<b>\$6,633</b>		

Source: Department of Legislative Services

## Direct Aid to Public Schools and Teachers' Retirement Payments in Fiscal 2010

County	Direct Aid	Retirement	Ranking by <u>Per Pupil Direct Aid</u>		Ranking by <u>Per Pupil Retirement</u>			
Allegany	\$86,109,361	\$8,021,470	1.	Baltimore City	\$10,655	1.	Worcester	\$1,134
Anne Arundel	273,394,604	62,628,729	2.	Allegany	10,044	2.	Montgomery	1,097
Baltimore City	811,390,702	73,779,744	3.	Somerset	8,652	3.	Kent	1,050
Baltimore	508,142,798	85,998,709	4.	Caroline	7,999	4.	Howard	1,048
Calvert	85,254,601	15,163,115	5.	Wicomico	7,936	5.	Somerset	1,002
Caroline	42,112,806	4,449,995	6.	Prince George's	7,220	6.	Baltimore City	969
Carroll	139,046,011	23,405,032	7.	Dorchester	6,868	7.	Prince George's	943
Cecil	97,673,963	13,251,127	8.	Washington	6,617	8.	Allegany	936
Charles	149,321,397	21,545,453	9.	Cecil	6,264	9.	Garrett	918
Dorchester	29,882,305	3,940,669	10.	Garrett	5,892	10.	Calvert	909
Frederick	201,466,538	33,017,195	11.	Charles	5,703	11.	Dorchester	906
Garrett	24,776,496	3,858,744	12.	St. Mary's	5,689	12.	Anne Arundel	869
Harford	207,328,656	31,578,248	13.	Harford	5,503	13.	Baltimore	867
Howard	196,215,678	51,557,589	14.	Baltimore	5,123	14.	Carroll	851
Kent	10,014,895	2,121,580	15.	Calvert	5,110	15.	Cecil	850
Montgomery	449,413,441	149,981,157	16.	Frederick	5,090	16.	Caroline	845
Prince George's	871,833,382	113,898,728	17.	Carroll	5,054	17.	Wicomico	842
Queen Anne's	30,765,135	5,778,261	18.	Kent	4,955	18.	Harford	838
St. Mary's	92,455,392	13,031,237	19.	Queen Anne's	4,049	19.	Frederick	834
Somerset	23,680,500	2,743,826	20.	Howard	3,990	20.	Charles	823
Talbot	10,915,359	3,309,785	21.	Anne Arundel	3,794	21.	St. Mary's	802
Washington	142,431,349	16,580,708	22.	Montgomery	3,287	22.	Talbot	784
Wicomico	116,079,432	12,316,880	23.	Worcester	2,770	23.	Washington	770
Worcester	17,390,517	7,118,593	24.	Talbot	2,587	24.	Queen Anne's	760
Unallocated	29,415,901	0						
<b>Total</b>	<b>\$4,646,511,219</b>	<b>\$759,076,574</b>		<b>Statewide</b>	<b>\$5,702</b>		<b>Statewide</b>	<b>\$931</b>

Source: Department of Legislative Services

## Overpayment of Direct Education Aid in Fiscal 2009 Results in a Lower Growth Rate in Fiscal 2010

County	Appropriation FY 2009	Overpayment FY 2009	Adjusted FY 2009	Allowance FY 2010	Annual Percent Difference from the FY 2009	
					Adjusted	Appropriation
Allegany	\$86,710,744	\$878,978	\$85,831,766	\$86,109,361	0.3%	-0.7%
Anne Arundel	278,508,452	5,154,362	273,354,090	273,394,604	0.0%	-1.8%
Baltimore City	834,982,142	0	834,982,142	811,390,702	-2.8%	-2.8%
Baltimore	516,607,537	5,991,962	510,615,575	508,142,798	-0.5%	-1.6%
Calvert	85,771,313	895,611	84,875,702	85,254,601	0.4%	-0.6%
Caroline	42,989,316	356,786	42,632,530	42,112,806	-1.2%	-2.0%
Carroll	143,073,995	1,429,622	141,644,373	139,046,011	-1.8%	-2.8%
Cecil	98,983,893	975,906	98,007,987	97,673,963	-0.3%	-1.3%
Charles	151,169,459	2,545,208	148,624,251	149,321,397	0.5%	-1.2%
Dorchester	30,732,092	337,509	30,394,583	29,882,305	-1.7%	-2.8%
Frederick	204,060,920	2,147,774	201,913,146	201,466,538	-0.2%	-1.3%
Garrett	25,479,793	0	25,479,793	24,776,496	-2.8%	-2.8%
Harford	210,745,353	1,963,041	208,782,312	207,328,656	-0.7%	-1.6%
Howard	195,587,338	3,167,202	192,420,136	196,215,678	2.0%	0.3%
Kent	10,424,917	0	10,424,917	10,014,895	-3.9%	-3.9%
Montgomery	422,330,270	0	422,330,270	449,413,441	6.4%	6.4%
Prince George's	907,074,197	67,701	907,006,496	871,833,382	-3.9%	-3.9%
Queen Anne's	30,682,644	497,460	30,185,184	30,765,135	1.9%	0.3%
St. Mary's	94,953,976	1,417,905	93,536,071	92,455,392	-1.2%	-2.6%
Somerset	23,597,131	0	23,597,131	23,680,500	0.4%	0.4%
Talbot	10,503,799	0	10,503,799	10,915,359	3.9%	3.9%
Washington	140,786,996	1,770,294	139,016,702	142,431,349	2.5%	1.2%
Wicomico	110,293,568	1,241,172	109,052,396	116,079,432	6.4%	5.2%
Worcester	17,128,573	0	17,128,573	17,390,517	1.5%	1.5%
<b>Total</b>	<b>\$4,717,531,409</b>	<b>\$30,838,493</b>	<b>\$4,686,692,916</b>	<b>\$4,646,511,219</b>	<b>-0.9%</b>	<b>-1.5%</b>

Source: Department of Legislative Services

## Comparison of Wealth Per Pupil for State Education Aid Programs Fiscal 2009 and 2010

<u>County</u>	<u>Fiscal 2009</u>	<u>Fiscal 2010</u>	<u>Percent Difference</u>	<u>Per Pupil Wealth</u>		<u>Growth in Per Pupil Wealth</u>	
Allegany	\$232,669	\$253,589	9.0%	1. Worcester	\$1,449,183	1. Worcester	17.1%
Anne Arundel	571,232	637,517	11.6%	2. Talbot	1,091,019	2. Caroline	16.7%
Baltimore City	241,651	271,736	12.4%	3. Montgomery	764,026	3. Kent	16.6%
Baltimore	454,919	510,625	12.2%	4. Kent	741,355	4. Prince George's	16.0%
Calvert	392,845	430,506	9.6%	5. Anne Arundel	637,517	5. Dorchester	16.0%
Caroline	262,215	306,092	16.7%	6. Queen Anne's	587,774	6. St. Mary's	15.5%
Carroll	381,712	430,305	12.7%	7. Howard	563,591	7. Garrett	13.8%
Cecil	334,682	380,087	13.6%	8. Baltimore	510,625	8. Cecil	13.6%
Charles	348,341	393,969	13.1%	9. Garrett	503,432	9. Talbot	13.5%
Dorchester	348,786	404,611	16.0%	10. Frederick	440,731	10. Somerset	13.5%
Frederick	393,024	440,731	12.1%	11. Calvert	430,506	11. Charles	13.1%
Garrett	442,553	503,432	13.8%	12. Carroll	430,305	12. Carroll	12.7%
Harford	369,649	415,950	12.5%	13. Harford	415,950	13. Harford	12.5%
Howard	509,009	563,591	10.7%	14. St. Mary's	412,482	14. Baltimore City	12.4%
Kent	636,064	741,355	16.6%	15. Dorchester	404,611	15. Baltimore	12.2%
Montgomery	704,112	764,026	8.5%	16. Prince George's	395,932	16. Frederick	12.1%
Prince George's	341,193	395,932	16.0%	17. Charles	393,969	17. Anne Arundel	11.6%
Queen Anne's	529,890	587,774	10.9%	18. Cecil	380,087	18. Washington	11.4%
St. Mary's	357,219	412,482	15.5%	19. Washington	372,101	19. Queen Anne's	10.9%
Somerset	287,438	326,231	13.5%	20. Somerset	326,231	20. Howard	10.7%
Talbot	961,272	1,091,019	13.5%	21. Wicomico	308,642	21. Calvert	9.6%
Washington	333,898	372,101	11.4%	22. Caroline	306,092	22. Allegany	9.0%
Wicomico	284,459	308,642	8.5%	23. Baltimore City	271,736	23. Montgomery	8.5%
Worcester	1,237,416	1,449,183	17.1%	24. Allegany	253,589	24. Wicomico	8.5%
<b>Total</b>	<b>\$452,723</b>	<b>\$506,321</b>	<b>11.8%</b>				

## Most School Systems Experiencing Decline in FTE Student Enrollment September 2007 (Fiscal 2009) and September 2008 (Fiscal 2010)

<u>County</u>	<u>Fiscal 2009</u>	<u>Fiscal 2010</u>	<u>Percent Difference</u>	<u>FTES Enrollment Growth</u>	<u>Percent Change FTES Enrollment</u>		
Allegany	8,993	8,758	-2.6%	1. Montgomery	1,426	1. Wicomico	1.1%
Anne Arundel	71,605	71,838	0.3%	2. Baltimore City	667	2. Montgomery	1.1%
Baltimore City	77,252	77,919	0.9%	3. Howard	302	3. Queen Anne's	0.9%
Baltimore	100,023	99,306	-0.7%	4. Anne Arundel	233	4. Baltimore City	0.9%
Calvert	16,952	16,664	-1.7%	5. Wicomico	157	5. Talbot	0.7%
Caroline	5,349	5,253	-1.8%	6. Queen Anne's	68	6. Howard	0.6%
Carroll	27,989	27,629	-1.3%	7. Washington	54	7. Anne Arundel	0.3%
Cecil	15,769	15,633	-0.9%	8. Talbot	29	8. Washington	0.3%
Charles	25,843	25,861	0.1%	9. Charles	17	9. Charles	0.1%
Dorchester	4,433	4,322	-2.5%	10. St. Mary's	-10	10. St. Mary's	-0.1%
Frederick	39,394	39,104	-0.7%	11. Somerset	-11	11. Somerset	-0.4%
Garrett	4,395	4,291	-2.4%	12. Worcester	-58	12. Baltimore	-0.7%
Harford	38,152	37,670	-1.3%	13. Kent	-71	13. Frederick	-0.7%
Howard	48,534	48,836	0.6%	14. Caroline	-96	14. Prince George's	-0.8%
Kent	2,152	2,081	-3.3%	15. Garrett	-104	15. Cecil	-0.9%
Montgomery	134,547	135,973	1.1%	16. Dorchester	-111	16. Worcester	-0.9%
Prince George's	122,513	121,567	-0.8%	17. Cecil	-136	17. Harford	-1.3%
Queen Anne's	7,450	7,517	0.9%	18. Allegany	-235	18. Carroll	-1.3%
St. Mary's	16,023	16,013	-0.1%	19. Calvert	-288	19. Calvert	-1.7%
Somerset	2,725	2,714	-0.4%	20. Frederick	-290	20. Caroline	-1.8%
Talbot	4,232	4,260	0.7%	21. Carroll	-361	21. Garrett	-2.4%
Washington	21,187	21,241	0.3%	22. Harford	-482	22. Dorchester	-2.5%
Wicomico	13,856	14,013	1.1%	23. Baltimore	-717	23. Allegany	-2.6%
Worcester	6,376	6,318	-0.9%	24. Prince George's	-947	24. Kent	-3.3%
<b>Total</b>	<b>815,742</b>	<b>814,779</b>	<b>-0.1%</b>	<b>Statewide</b>	<b>-964</b>	<b>Statewide</b>	<b>-0.1%</b>



## Students Approved for Free and Reduced Priced Meals Fiscal 2009 and 2010

County	Fiscal 2009	Fiscal 2010	Percent Difference	FRPM Count as Percent of Total Enrollment	Change in FRPM Count		
Allegany	4,317	4,225	-2.1%	1. Baltimore City	71.0%	1. Cecil	12.5%
Anne Arundel	15,362	16,004	4.2%	2. Somerset	60.1%	2. Somerset	12.4%
Baltimore City	55,565	55,595	0.1%	3. Dorchester	49.3%	3. Queen Anne's	9.3%
Baltimore	34,202	36,118	5.6%	4. Wicomico	48.4%	4. Howard	8.9%
Calvert	2,468	2,588	4.9%	5. Allegany	48.2%	5. Washington	8.6%
Caroline	2,297	2,427	5.7%	6. Caroline	46.2%	6. Wicomico	8.4%
Carroll	3,129	3,381	8.1%	7. Prince George's	45.9%	7. Talbot	8.3%
Cecil	4,232	4,761	12.5%	8. Garrett	43.0%	8. Charles	8.1%
Charles	5,838	6,310	8.1%	9. Washington	40.7%	9. Carroll	8.1%
Dorchester	2,206	2,137	-3.1%	10. Kent	40.3%	10. Harford	7.0%
Frederick	6,633	6,948	4.7%	11. Baltimore	36.2%	11. Montgomery	6.1%
Garrett	1,824	1,852	1.5%	12. Worcester	35.4%	12. Caroline	5.7%
Harford	7,866	8,413	7.0%	13. Talbot	30.5%	13. Baltimore	5.6%
Howard	5,724	6,231	8.9%	14. Cecil	30.5%	14. Calvert	4.9%
Kent	844	839	-0.6%	15. Montgomery	25.7%	15. Frederick	4.7%
Montgomery	33,020	35,031	6.1%	16. Charles	24.4%	16. Anne Arundel	4.2%
Prince George's	55,352	56,085	1.3%	17. St. Mary's	24.0%	17. Worcester	3.6%
Queen Anne's	1,138	1,244	9.3%	18. Harford	22.3%	18. Garrett	1.5%
St. Mary's	4,197	3,861	-8.0%	19. Anne Arundel	22.2%	19. Prince George's	1.3%
Somerset	1,454	1,634	12.4%	20. Frederick	17.7%	20. Baltimore City	0.1%
Talbot	1,198	1,298	8.3%	21. Queen Anne's	16.4%	21. Kent	-0.6%
Washington	7,958	8,646	8.6%	22. Calvert	15.5%	22. Allegany	-2.1%
Wicomico	6,507	7,056	8.4%	23. Howard	12.7%	23. Dorchester	-3.1%
Worcester	2,162	2,240	3.6%	24. Carroll	12.2%	24. St. Mary's	-8.0%
<b>Total</b>	<b>265,493</b>	<b>274,924</b>	<b>3.6%</b>	<b>Statewide</b>	<b>33.6%</b>	<b>Statewide</b>	<b>3.6%</b>

FRPM = Free and Reduced Priced Meals

## Students Receiving Special Education Services Fiscal 2009 and 2010

<u>County</u>	<u>Fiscal 2009</u>	<u>Fiscal 2010</u>	<u>Percent Difference</u>	<u>Special Education Students as Percent of Total Enrollment</u>	<u>Change in Special Education Students</u>		
Allegany	1,444	1,343	-7.0%	1. Baltimore City	17.7%	1. Prince George's	4.7%
Anne Arundel	8,500	7,957	-6.4%	2. Kent	16.1%	2. Harford	3.6%
Baltimore City	13,838	13,838	0.0%	3. Allegany	15.3%	3. Charles	1.6%
Baltimore	13,367	13,330	-0.3%	4. Somerset	14.4%	4. Montgomery	1.3%
Calvert	1,990	1,827	-8.2%	5. Harford	14.2%	5. Somerset	1.3%
Caroline	608	548	-9.9%	6. Cecil	13.8%	6. Baltimore City	0.0%
Carroll	3,450	3,240	-6.1%	7. Garrett	13.4%	7. Baltimore	-0.3%
Cecil	2,185	2,151	-1.6%	8. Baltimore	13.4%	8. Dorchester	-0.4%
Charles	2,234	2,269	1.6%	9. St. Mary's	13.3%	9. Wicomico	-1.3%
Dorchester	485	483	-0.4%	10. Montgomery	12.5%	10. Howard	-1.4%
Frederick	4,846	4,620	-4.7%	11. Washington	12.2%	11. Cecil	-1.6%
Garrett	632	576	-8.9%	12. Prince George's	12.2%	12. Kent	-3.4%
Harford	5,170	5,355	3.6%	13. Frederick	11.8%	13. St. Mary's	-3.9%
Howard	4,597	4,532	-1.4%	14. Carroll	11.7%	14. Talbot	-4.2%
Kent	348	336	-3.4%	15. Wicomico	11.5%	15. Worcester	-4.6%
Montgomery	16,731	16,953	1.3%	16. Queen Anne's	11.4%	16. Frederick	-4.7%
Prince George's	14,213	14,887	4.7%	17. Dorchester	11.2%	17. Washington	-5.9%
Queen Anne's	976	864	-11.5%	18. Anne Arundel	11.1%	18. Carroll	-6.1%
St. Mary's	2,223	2,137	-3.9%	19. Calvert	10.9%	19. Anne Arundel	-6.4%
Somerset	387	392	1.3%	20. Worcester	10.5%	20. Allegany	-7.0%
Talbot	378	362	-4.2%	21. Caroline	10.4%	21. Calvert	-8.2%
Washington	2,767	2,605	-5.9%	22. Howard	9.3%	22. Garrett	-8.9%
Wicomico	1,704	1,682	-1.3%	23. Charles	8.8%	23. Caroline	-9.9%
Worcester	696	664	-4.6%	24. Talbot	8.5%	24. Queen Anne's	-11.5%
<b>Total</b>	<b>103,769</b>	<b>102,951</b>	<b>-0.8%</b>	<b>Statewide</b>	<b>12.6%</b>	<b>Statewide</b>	<b>-0.8%</b>

## Students Identified as Limited English Proficient Fiscal 2009 and 2010

County	Fiscal 2009	Fiscal 2010	Percent Difference	LEP Students as Percent of Total Enrollment	Change in LEP Students		
Allegany	25	22	-12.0%	1. Montgomery	12.2%	1. Garrett	200.0%
Anne Arundel	1,659	2,015	21.5%	2. Prince George's	10.3%	2. Somerset	44.7%
Baltimore City	1,472	1,698	15.4%	3. Talbot	4.5%	3. Washington	23.4%
Baltimore	3,064	3,318	8.3%	4. Somerset	4.5%	4. Calvert	22.2%
Calvert	158	193	22.2%	5. Howard	3.9%	5. Anne Arundel	21.5%
Caroline	147	154	4.8%	6. Frederick	3.4%	6. Wicomico	20.4%
Carroll	192	173	-9.9%	7. Baltimore	3.3%	7. Talbot	19.1%
Cecil	119	122	2.5%	8. Kent	3.1%	8. Baltimore City	15.4%
Charles	176	190	8.0%	9. Worcester	3.0%	9. Frederick	12.9%
Dorchester	84	65	-22.6%	10. Caroline	2.9%	10. Baltimore	8.3%
Frederick	1,192	1,346	12.9%	11. Anne Arundel	2.8%	11. Charles	8.0%
Garrett	1	3	200.0%	12. Wicomico	2.3%	12. Queen Anne's	7.8%
Harford	491	476	-3.1%	13. Baltimore City	2.2%	13. Caroline	4.8%
Howard	1,878	1,900	1.2%	14. Washington	2.0%	14. Montgomery	3.6%
Kent	64	65	1.6%	15. Queen Anne's	1.8%	15. Prince George's	3.1%
Montgomery	16,072	16,646	3.6%	16. Dorchester	1.5%	16. Cecil	2.5%
Prince George's	12,245	12,626	3.1%	17. Harford	1.3%	17. Worcester	1.6%
Queen Anne's	128	138	7.8%	18. Calvert	1.2%	18. Kent	1.6%
St. Mary's	139	122	-12.2%	19. Cecil	0.8%	19. Howard	1.2%
Somerset	85	123	44.7%	20. St. Mary's	0.8%	20. Harford	-3.1%
Talbot	162	193	19.1%	21. Charles	0.7%	21. Carroll	-9.9%
Washington	338	417	23.4%	22. Carroll	0.6%	22. Allegany	-12.0%
Wicomico	280	337	20.4%	23. Allegany	0.3%	23. St. Mary's	-12.2%
Worcester	187	190	1.6%	24. Garrett	0.1%	24. Dorchester	-22.6%
<b>Total</b>	<b>40,358</b>	<b>42,532</b>	<b>5.4%</b>	<b>Statewide</b>	<b>5.2%</b>	<b>Statewide</b>	<b>5.4%</b>

LEP = Limited English Proficient

## Racial Composition in Maryland Public Schools

### September 2008

County	White	African American	Hispanic/Latino	Asian	Native American	Percent Minority
Allegany	92.3%	5.6%	0.7%	0.9%	0.5%	1. Prince George's 95.3%
Anne Arundel	66.1%	22.9%	6.6%	4.0%	0.4%	2. Baltimore City 92.2%
Baltimore City	7.8%	88.4%	2.8%	0.7%	0.3%	3. Charles 61.0%
Baltimore	48.7%	40.4%	4.7%	5.8%	0.5%	4. Montgomery 61.0%
Calvert	78.1%	16.9%	2.4%	2.0%	0.6%	5. Somerset 52.0%
Caroline	73.8%	18.5%	6.5%	0.8%	0.4%	6. Baltimore 51.4%
Carroll	91.2%	4.0%	2.4%	1.9%	0.4%	7. Wicomico 45.6%
Cecil	84.9%	10.1%	3.4%	1.2%	0.4%	8. Dorchester 45.0%
Charles	39.0%	53.3%	3.6%	3.3%	0.8%	9. Howard 42.7%
Dorchester	55.0%	39.1%	4.2%	1.3%	0.4%	10. Anne Arundel 33.9%
Frederick	74.3%	12.3%	8.2%	4.8%	0.4%	11. Kent 30.0%
Garrett	98.8%	0.5%	0.3%	0.3%	0.1%	12. Talbot 29.7%
Harford	72.5%	20.2%	3.7%	3.1%	0.6%	13. Worcester 29.6%
Howard	57.3%	21.3%	5.5%	15.6%	0.3%	14. St. Mary's 27.8%
Kent	69.9%	23.7%	5.2%	0.7%	0.4%	15. Harford 27.6%
Montgomery	39.1%	23.1%	22.1%	15.5%	0.3%	16. Caroline 26.2%
Prince George's	4.7%	73.4%	18.5%	3.0%	0.4%	17. Frederick 25.7%
Queen Anne's	87.0%	8.2%	2.9%	1.5%	0.4%	18. Calvert 21.9%
St. Mary's	72.2%	21.0%	3.3%	2.9%	0.6%	19. Washington 20.0%
Somerset	48.0%	45.1%	5.9%	0.9%	0.1%	20. Cecil 15.1%
Talbot	70.3%	20.7%	6.9%	1.9%	0.2%	21. Queen Anne's 13.0%
Washington	79.9%	13.5%	4.4%	1.9%	0.2%	22. Carroll 8.7%
Wicomico	54.5%	36.8%	5.1%	3.5%	0.2%	23. Allegany 7.7%
Worcester	70.4%	23.3%	3.9%	1.9%	0.5%	24. Garrett 1.2%
<b>Maryland</b>	<b>46.2%</b>	<b>38.0%</b>	<b>9.5%</b>	<b>5.9%</b>	<b>0.4%</b>	<b>Statewide 53.8%</b>

Source: Maryland State Department of Education

# Local Government Expenditures

---

(\$ in Millions)

	<u>FY 2005</u> <u>Expenditures</u>	<u>Percent</u> <u>of Total</u>
County Level	\$20,022.5	95.3%
Municipal Level	<u>\$995.1</u>	<u>4.7%</u>
<b>Total</b>	<b>\$21,017.5</b>	<b>100.0%</b>

---

<u>County Level</u>	<u>FY 2005</u> <u>Expenditures</u>	<u>Percent</u> <u>of Total</u>
Public Schools	\$9,470.5	50.2%
Libraries	223.7	1.2%
Community Colleges	794.9	4.2%
Health Departments	378.7	2.0%
County Governments	<u>7,979.0</u>	<u>42.3%</u>
<b>Subtotal</b>	<b>\$18,846.9</b>	<b>100.0%</b>
Debt Service	<u>1,175.6</u>	
<b>Total</b>	<b>\$20,022.5</b>	

---

# County Government Expenditures

---

	<u>FY 2005 Expenditures (\$ in Millions)</u>	<u>Percent of Total</u>
<b>County Government Services</b>		
General Government	1,226.0	9.1%
Public Safety	2,149.2	16.0%
Public Works	2,323.4	17.3%
Social Services/Health	504.1	3.7%
Parks and Recreation	509.8	3.8%
Community Development	473.0	3.5%
Miscellaneous	793.6	5.9%
<b>Subtotal</b>	<b>\$7,979.0</b>	<b>59.3%</b>
 <b>County Payments to Local Boards</b>		
Public Schools	4,931.1	36.6%
Libraries	160.7	1.2%
Community Colleges	278.9	2.1%
Health Departments	108.6	0.8%
<b>Subtotal</b>	<b>\$5,479.4</b>	<b>40.7%</b>
 <b>Total County Expenditures</b>	 <b>\$13,458.4</b>	 <b>100.0%</b>

---

# Municipal Government Expenditures

---

	<u>FY 2005</u> <u>Expenditures</u>	<u>Percent</u> <u>of Total</u>
Public Works	\$429.9	43.2%
Public Safety	209.7	21.1%
General Government	122.6	12.3%
Parks and Recreation	91.2	9.2%
Community/Economic Dev.	59.9	6.0%
Miscellaneous	30.0	3.0%
Debt Service	<u>51.8</u>	<u>5.2%</u>
<b>Total</b>	<b>\$995.1</b>	<b>100.0%</b>

---

# Local Government Expenditures by County

## Fiscal 2005 (\$ in Millions)

County	County	Municipal	Total	Percent County	Percent Municipal
Allegany	\$216.1	\$45.6	\$261.7	82.6%	17.4%
Anne Arundel	1,647.6	72.7	1,720.3	95.8%	4.2%
Baltimore City	2,756.9	0.0	2,756.9	100.0%	0.0%
Baltimore	2,326.4	0.0	2,326.4	100.0%	0.0%
Calvert	294.8	7.7	302.6	97.4%	2.6%
Caroline	88.6	12.9	101.5	87.3%	12.7%
Carroll	501.7	39.6	541.3	92.7%	7.3%
Cecil	247.5	22.5	270.0	91.7%	8.3%
Charles	524.4	12.3	536.7	97.7%	2.3%
Dorchester	94.2	19.6	113.9	82.7%	17.3%
Frederick	691.1	106.1	797.3	86.7%	13.3%
Garrett	108.4	5.9	114.3	94.8%	5.2%
Harford	738.5	38.7	777.1	95.0%	5.0%
Howard	1,146.5	0.0	1,146.5	100.0%	0.0%
Kent	58.8	6.5	65.3	90.0%	10.0%
Montgomery	4,318.3	165.5	4,483.8	96.3%	3.7%
Prince George's	2,903.4	122.5	3,025.9	96.0%	4.0%
Queen Anne's	143.9	4.6	148.5	96.9%	3.1%
St. Mary's	283.5	2.3	285.8	99.2%	0.8%
Somerset	61.8	5.5	67.3	91.8%	8.2%
Talbot	86.5	68.4	154.9	55.9%	44.1%
Washington	328.5	84.1	412.6	79.6%	20.4%
Wicomico	259.7	44.6	304.3	85.3%	14.7%
Worcester	195.3	107.4	302.7	64.5%	35.5%
<b>Statewide</b>	<b>\$20,022.5</b>	<b>\$995.1</b>	<b>\$21,017.5</b>	<b>95.3%</b>	<b>4.7%</b>

Source: *Local Government Finances Fiscal 2005*, Department of Legislative Services